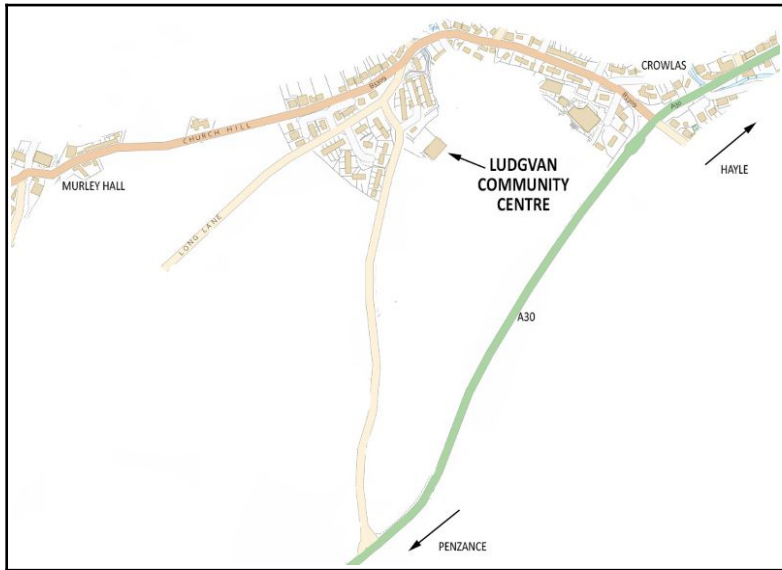


CLUB PROGRAMME
WINTER 2021-22

Penwith 
Photographic Group

CONTACTING and VISITING PPG

Our clubhouse is based at Ludgvan Community Centre in the Lower Quarters of Ludgvan, only a stone's throw from Murley Hall, where we used to meet.



Ludgvan Community Centre (LCC)

Jubilee Hall, Fairfield, Ludgvan, Penzance TR20 8ES

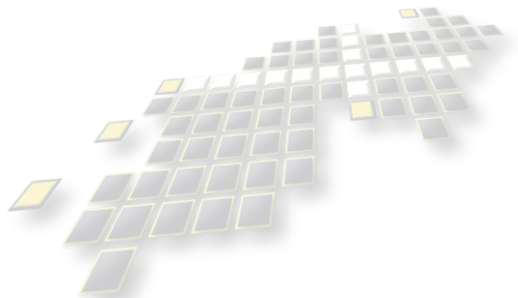
If you would like any more information about joining then please come along to one of our meetings or get in touch by email or messaging us on Facebook.

Find us on Facebook:
[Facebook.com/atThePPG](https://www.facebook.com/atThePPG)

Website
www.thePPG.org.uk

Email
info@thePPG.org.uk

Cover image:
'Blue Hour' by Gillian Thomas



Issue 2021-22 : A5 v3

A BRIEF INTRODUCTION to PPG

Over recent years we have grown and are now classed as a medium/large sized club with around 50 members, but have remained a friendly and democratic group of photographers. We welcome anyone with an interest in photography. Our aim is to encourage and advance photography at all levels, beginners to advanced, via lectures, demonstrations, competitions, exhibitions, field trips and interaction of club members themselves.

Our meetings are held on Thursday evenings at 7:30pm (unless otherwise stated) but **unlike other clubs we meet throughout the year**, most clubs only meet in the winter months. From May to August we have field trips to a variety of outdoor locations around west Cornwall and occasionally further afield, then from September to April we meet indoors. In addition to our Thursday programme we also hold up to a dozen day trips at the weekends, these vary from events around Cornwall to a day's wildlife shoot or a day out on Dartmoor.

MEMBERSHIP

We have a small annual membership fee of £15 but non-members are always welcome to attend the occasional meeting at the guest rate, either to see if they might like to join or simply because they are interested in a particular event.

There is no charge for taking part in our field trips, though we do charge £2.50 to members and £4 for guests attending our indoor meetings, this helps to cover the costs of hiring the hall, our guest speakers and judges, and the half time light refreshments, however the bar at the LCC is available should you want something a little stronger. *The bar is closed at present.*

As a member, not only will you benefit from the lower admission fee, but you will have access to our two 'closed groups' on Facebook, 'PPG Members' for help and advice at any time, and 'The Facebook Monthly Challenge'.

So what do you get for your membership fee?

- 18 local field trips during the summer months
- up to 12 additional day trips, Coddiwomples throughout the year
- 32 indoor meetings
 - Over a dozen speaker evenings
 - Plenty of competition evenings
 - Practicals and workshops
- Entry to our competitions
- Access to our closed Facebook groups
- Access to WCPF and CPA events
- New friends with a common interest
- and much more!

WINTER PROGRAMME

A slimmed down version of our programme this year, due to our extended 'Bumper' summer programme which eventually had over thirty field trips all over Cornwall.

Keep up to date with all the latest information on our website and Facebook pages.

23/09/2021 7:30pm 21	MEMBERS IMAGES from the SUMMER A relaxing evening looking at members images taken during the summer of 2020.
30/09/2021 7:30pm 22	10 MINUTES An evening of ten minute presentations by members.
06/10/2021	DEADLINE WEDNESDAY – Penwith League R1 (see page 9)
07/10/2021 7:30pm 23	TECHNICAL THURSDAY – Lightroom & Photoshop
14/10/2021 7:30pm 24	GUEST SPEAKER – Ashley Franklin 'The Wider World of Photography Part1' The story of portrait, fashion, industrial, war and social documentary photography.
21/10/2021 7:30pm 25	PRACTICAL EVENING TBC
28/10/2021 7:30pm 26	PENWITH LEAGUE Round 1 Judge: Stephen R Womack from Wakefield CC Open category only.
03/11/2021	DEADLINE WEDNESDAY – Penwith League R2 PRINTS (see page 9)
04/11/2021 7:30pm 27	GUEST SPEAKER – Graham Harries 'I see music!' <i>Through the years I've been really lucky not just to have seen but to have photographed some of my favourite singers and bands, in fact I've virtually been on stage with some of them.</i>
09/11/2021 7:30pm TUESDAY	TECHNICAL TUESDAY – Lightroom & Photoshop Zoom only event
10/11/2021	DEADLINE WEDNESDAY – The Externals (see page 9)
11/11/2021 7:30pm 28	10 MINUTES An evening of ten minute presentations by members.

18/11/2021 7:30pm 29	GUEST SPEAKER – David Jenner This evening we welcome David via Zoom for his presentation titled 'Night & Day Panoramas'
25/11/2021 7:30pm 31	SELECTION EVENING Tonight we select the images that will represent PPG in this year's external competitions.
02/12/2021 7:30pm 30	PENWITH LEAGUE Round 2 – PRINTS Judge: Ian Smith from Launceston CC Colour and Mono categories.
09/12/2021 7:30pm 32	10 MINUTES An evening of ten minute presentations by members.
13/12/2021	DEADLINE MONDAY – 10 Day Challenge (see page 9)
16/12/2021 7:30pm 33	10 DAY CHALLENGE This evening we will review and discuss the images members took during the 10 Day Challenge and vote for the winners.
34 35	XMAS BREAK
04/01/2022 7:30pm TUESDAY	TECHNICAL TUESDAY – Lightroom & Photoshop Zoom only event
06/01/2022 7:30pm 36	GUEST SPEAKER – Warren Alani This evening we welcome Warren via Zoom for his presentation titled 'Capturing The Imagination'
12/01/2022	DEADLINE WEDNESDAY – Penwith League R3 (see page 9)
13/01/2022 7:30pm 37	GUEST SPEAKER – Mike Martin This evening we welcome Mike via Zoom for his presentation titled 'It's not what you see, it's what you make!' <i>donation to 'Photographers with Disabilities'</i>
18/01/2022 7:30pm TUESDAY	INTER-CLUB BATTLE – PPG vs St Ives CC vs Launceston CC Host this round is Launceston using PPG Zoom. Zoom only event Judge: Duncan Armour of Ludlow PC
19/01/2022	DEADLINE WEDNESDAY – CPA Charles Hosken (see page 9)
20/01/2022 7:30pm 38	GUEST SPEAKER – Lee Sutton This evening we welcome back Lee via Zoom for his presentation titled 'My photographic Journey'. <i>Lee's fee will be donated to an autism specialist school.</i>
27/01/2022 7:30pm 39	PENWITH LEAGUE Round 3 Judge: TBC Open and Weather categories.

12/02/2022	DEADLINE WEDNESDAY – Penwith League R4 (see page 9)
03/02/2022 7:30pm 40	10 MINUTES An evening of ten minute presentations by members.
06/02/2022 SUNDAY	DPIC 2022 – This will be a Zoom event and free to club members Details TBC
08/02/2022 7:30pm TUESDAY	TECHNICAL TUESDAY – Lightroom & Photoshop Zoom only event
10/02/2022 7:30pm 41	INTER-CLUB BATTLE – PPG vs St Ives CC vs St Just CC Host this round is PPG. PPG members in the clubhouse only. Judge: Peter Wells, President of Wakefield CC
17/02/2022 7:30pm 42	GUEST SPEAKER – Malcolm Hupman This evening we welcome Malcolm via Zoom for his presentation titled ‘Where I Photograph Wildlife in the UK’ A talk full of advice.
24/02/2022 7:30pm 43	PENWITH LEAGUE Round 4 Judge: Cat Humphries – CACC approved judge Open and Sport categories.
28/02/2022 7:30pm MONDAY	INTER-CLUB BATTLE – PPG vs Kirkcaldy PS (Battle of the Tartans) Host this Year is KPS. Judge: Dave Tucker.
03/03/2022 7:30pm 44	GUEST SPEAKER – TBC
08/03/2022 7:30pm TUESDAY	TECHNICAL TUESDAY – Lightroom & Photoshop Zoom only event
09/03/2022	DEADLINE WEDNESDAY – Image of the Year (see page 9)
10/03/2022 7:30pm 45	INTER-CLUB BATTLE – PPG vs CRCC vs Truro CC Host this Year is PPG. PPG members in the clubhouse only. Judge: Cherry Larcombe
17/03/2022 7:30pm 46	PRACTICAL EVENING Table top photography with light boxes, still life, oil patterns and water droplet splash photography.
24/03/2022 7:30pm 47	SPARE WEEK – TBC

31/03/2022 7:30pm 48	10 MINUTES An evening of ten minute presentations by members.
06/04/2022	DEADLINE WEDNESDAY – Penwith League R5 <i>(see page 9)</i>
07/04/2022 7:30pm 49	IMAGE of the YEAR 2020-21 Digital and Print Rounds, this year with subcategories Judge: TBC
14/04/2022 7:30pm 50	GUEST SPEAKER – Ernest Porter This evening we welcome Ernest via Zoom for his presentation titled 'Action Photography - Photographing Raptors in Flight in the Kalahari'.
21/04/2022 7:30pm 51	The AGM
28/04/2022 7:30pm 52	PROGRAMME FINALE Penwith League R5 AV, trophy presentation and our Chairperson's end of year summary. Followed by buffet and social chat.
TBC TBC	CPA ANNUAL COMPETITION 2022 Details TBC
26/05/2022 7:30pm	INTER-CLUB BATTLE – Conwy CC vs Farnborough CC vs PPG Host is Farnborough. PPG supplying the judge. Judge: TBC

OUR COMPETITIONS

EXTERNAL COMPETITIONS

PPG are members of the Western Counties Photographic Federation (WCPF) and the Cornwall Photographic Alliance (CPA). Both the CPA and WCPF hold annual inter-club competitions we enter as a club and several that are for club members to enter as individuals. We refer to these as our external competitions.

WCPF

The DPIC (Digitally Projected Image Competition) is their inter-club competition and normally involves around fifty clubs in the South West.

Other WCPF competitions available to members are:

- **Member's Exhibition**, prints and digital projected images.
- **Knightshayes Trophy**, prints.
- **AV Competition**, audio/visual sequences.
- **Kingswood Salver**, a panel of prints (inter-club)

CPA

The CPA have three competitions that our competitions secretary deals with, these are:

- **CPA Annual Competition**, this is a club competition for digital images and prints. The presentation evening is in May each year and this is judged by top judges from around the UK.
- **Charles Hosken**, this is an open competition for club members. The presentation evening is normally in March. From 2020-21 the judges of this competition are experienced judges from around the UK.
- **CPA Nature & Wildlife Competition**, this again is for club members. The presentation evening this year is in November and is judged by top wildlife judges from around the WORLD!

The CPA competitions for club members have an entry fee of 50p per image.

There are links to these on our website.

INTERNAL COMPETITIONS

Penwith League, this is our internal competition which is judged by local external judges. There are four rounds, each round has two categories, one themed and the other is open. *Zoom judges from around the UK for 2020-21 and only two themed rounds.*

Image of the Year, speaks for itself, we have two categories which are digital and prints, the winner of each appears on our website and the covers of this programme, again judged externally. *Zoom judge from the UK again this year and prints are back!*

COMPETITION DEADLINES for image submission

	Maximum no. of images allowed	DIGITAL	PRINT
13-09-2021	Nature & Wildlife Competition (<i>CPA club members</i>)	6	-
22-09-2021	Review of our Summer Programme	33	-
06-10-2021	Penwith League R1	3	-
03-11-2021	Penwith League R2 (prints) – <i>digital copy</i>	3	-
04-11-2021	Penwith League R2 (prints)	-	3
10-11-2021	External Competitions (digital)	4	-
10-11-2021	External Competitions (prints) – <i>digital copy</i>	3	-
11-11-2021	External Competitions (prints)	-	3
13-12-2021	10 Day Challenge	6	-
12-01-2022	Penwith League R3	2+1	-
19-01-2022	Charles Hosken (<i>CPA club members</i>)	4	-
12-02-2022	Penwith League R4	2+1	-
09-03-2022	Image of the Year (digital)	2	-
09-03-2022	Image of the Year (prints) – <i>digital copy</i>	2	-
10-03-2022	Image of the Year (prints)	-	2
06-04-2022	Penwith League R5	4	-

*The information here is correct at the time of printing.
Please refer to our website and Facebook pages for all the latest:*

www.thePPG.org.uk
Facebook.com/atThePPG

COMMITTEE

The club is run by a small team of members, the current officers are:

Chairperson	Robin Millett
Vice-Chairperson	Arthur Roberts
Secretary	Deb Ramsay-Trease
Treasurer	Pat Millett
Competition Secretary	Steve Cann
Programme Secretary	Steve Cann
Website	Steve Cann
Social Media	Pat Millett
Social Media	Steve Cann
Committee Member	Barry Thompson
Committee Member	Alison Mortimer-Durant
CPA Rep	Steve Cann
CPA Rep	VACANT

NOTES

